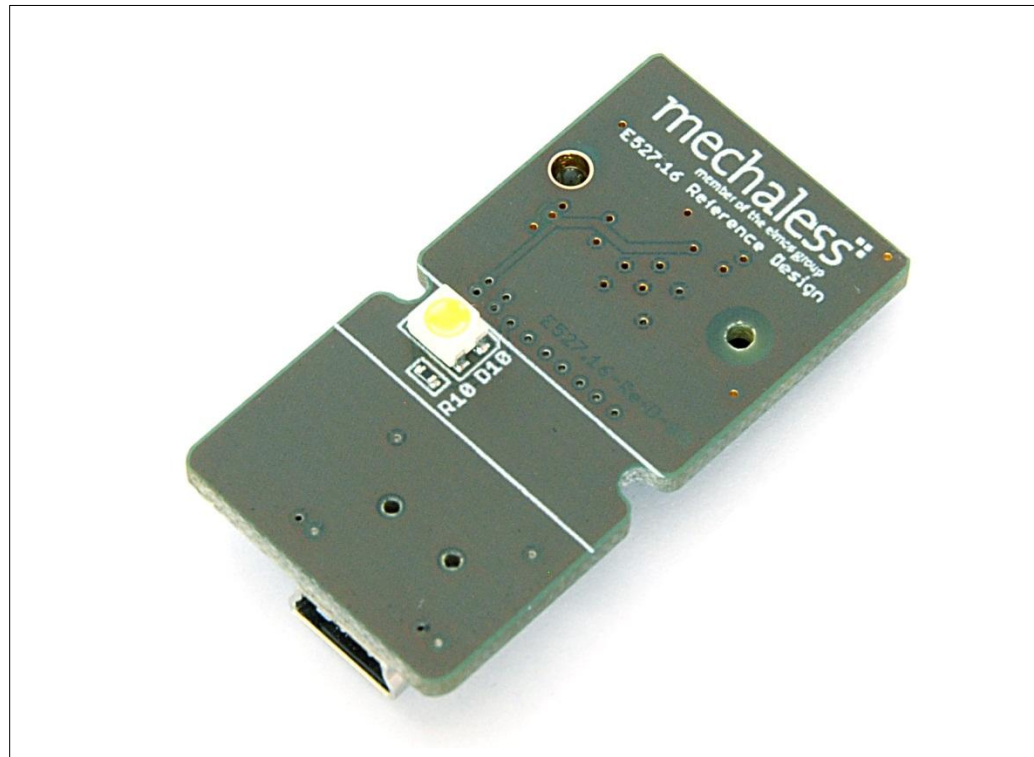
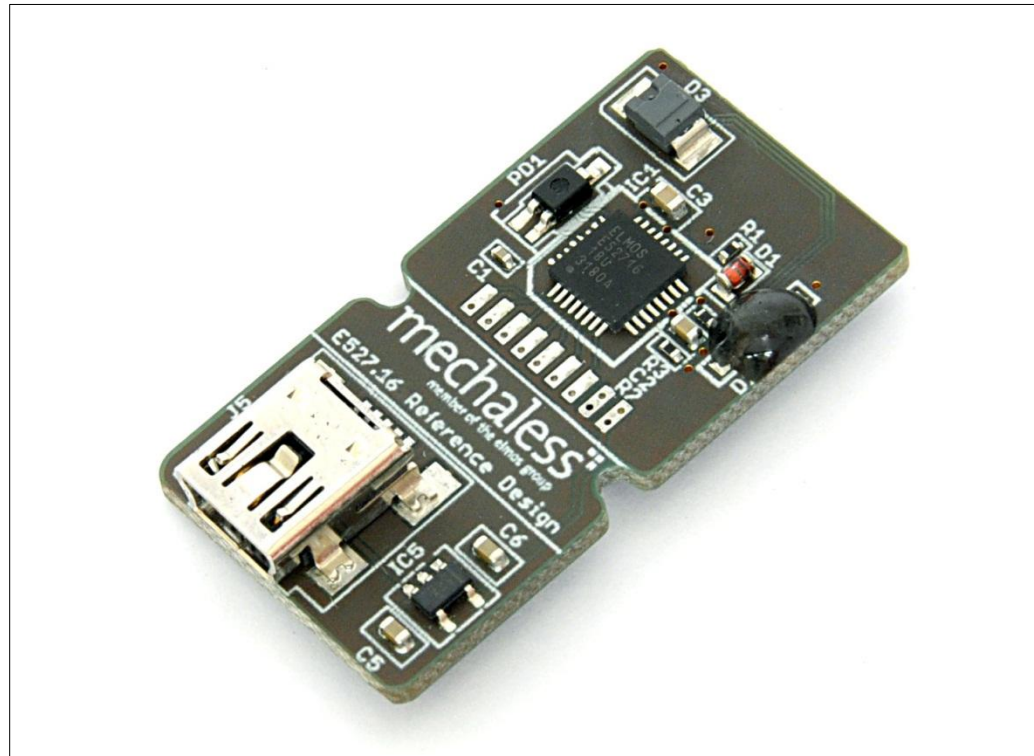


E527.16 Reference Design

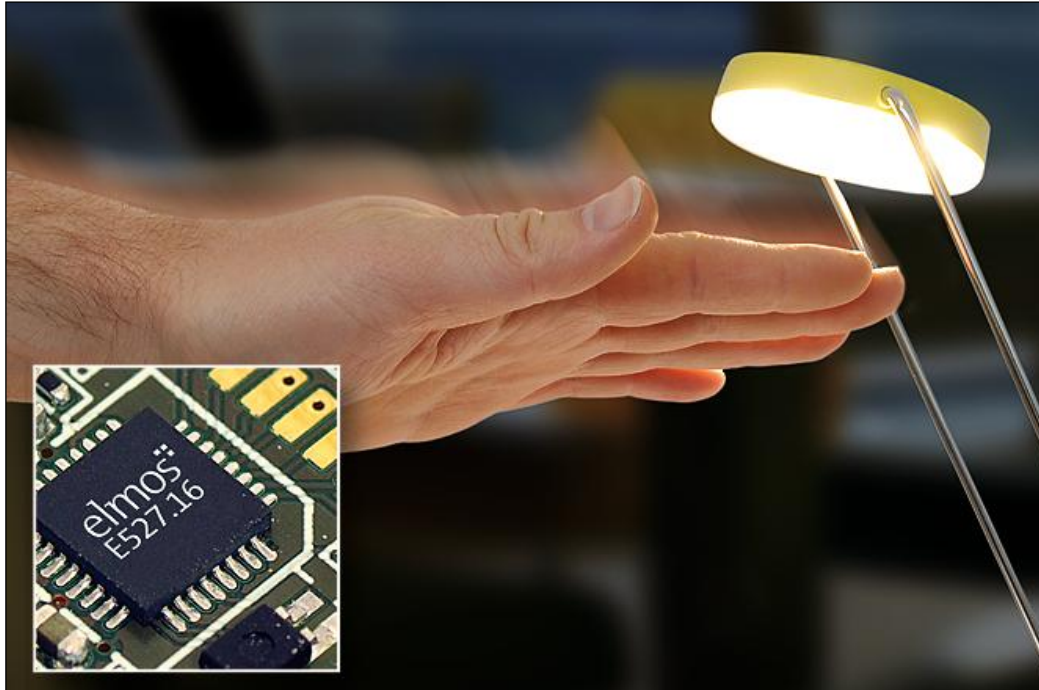


E527.16 Reference Design



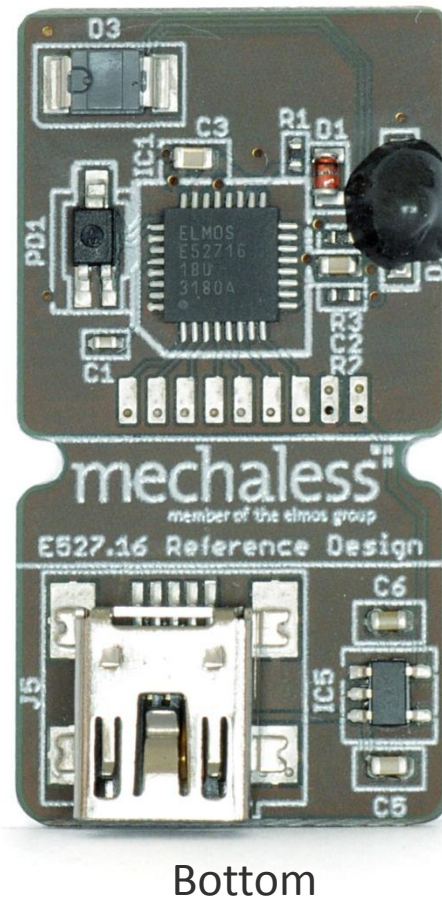
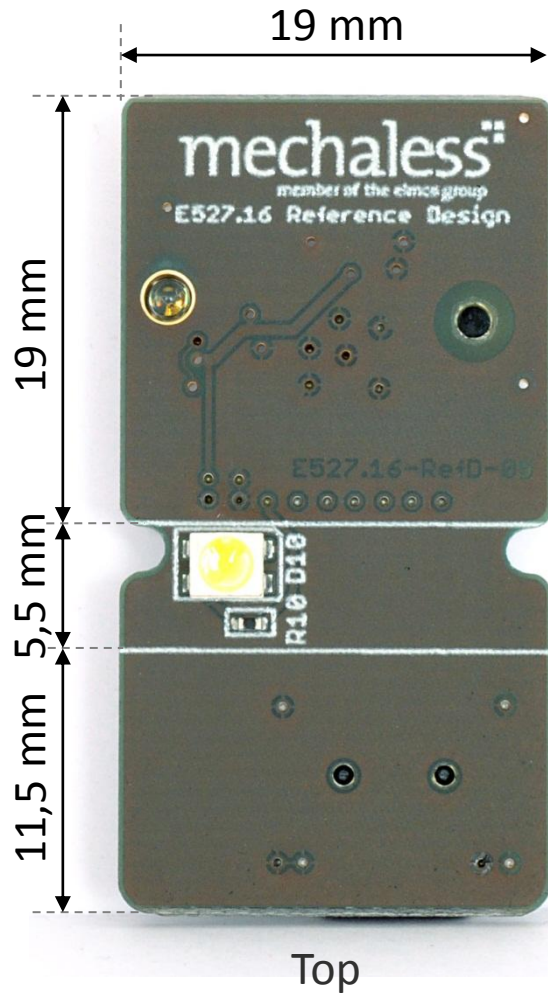
The advanced ready-to-use functions are displayed clearly with the E527.16 Reference Design (Mechaless article no. RD 1210001).

E527.16 Reference Design

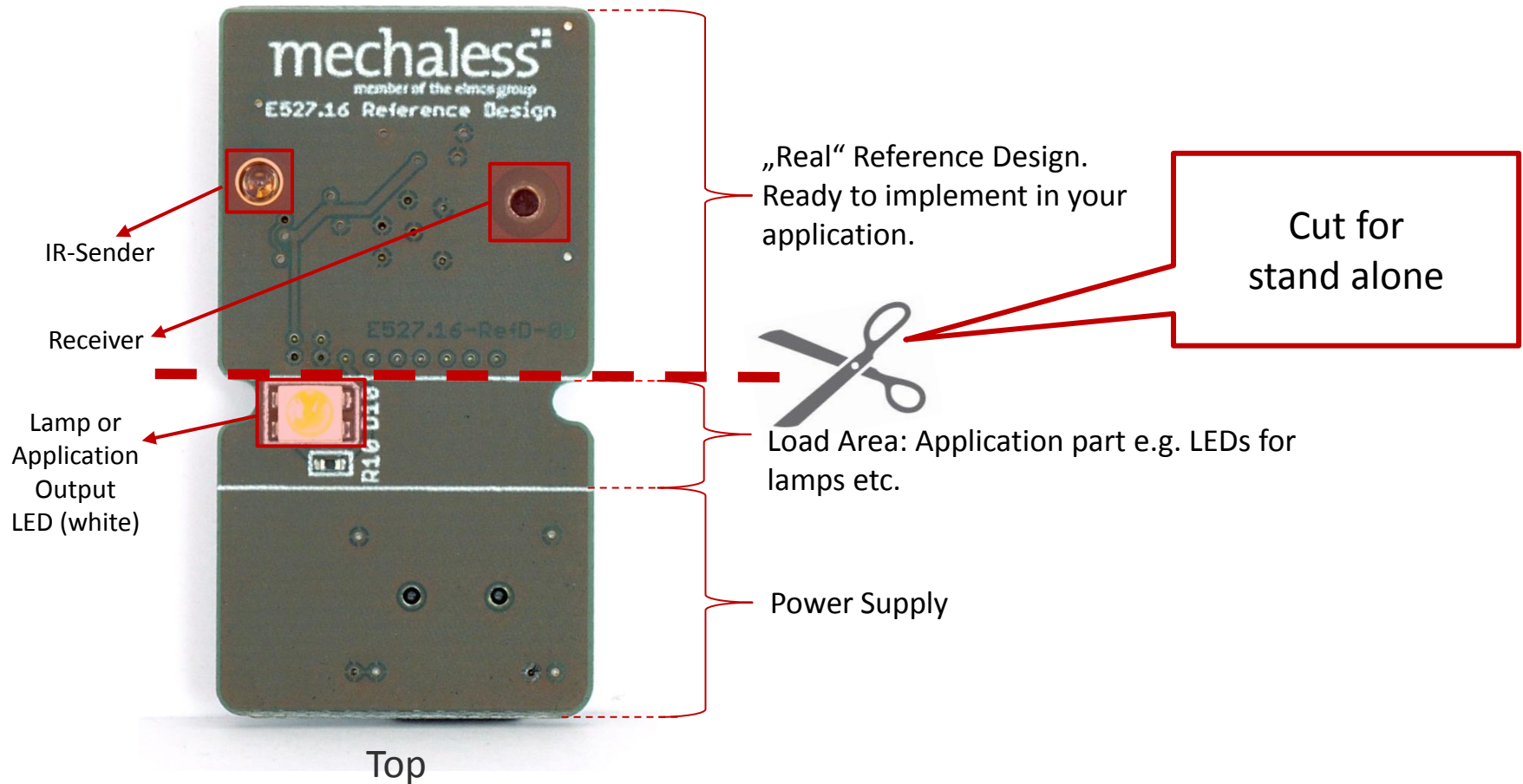


- Do not develop gesture control, simply use it!

E527.16 Reference Design – Dimensions



E527.16 Reference Design



„Real“ Reference Design.
Ready to implement in your
application.

Cut for
stand alone

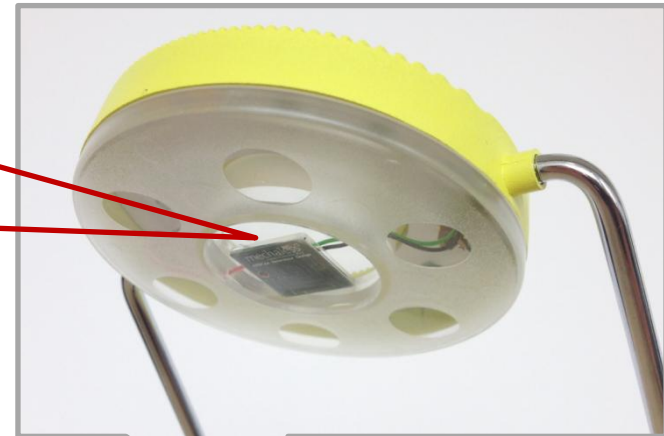
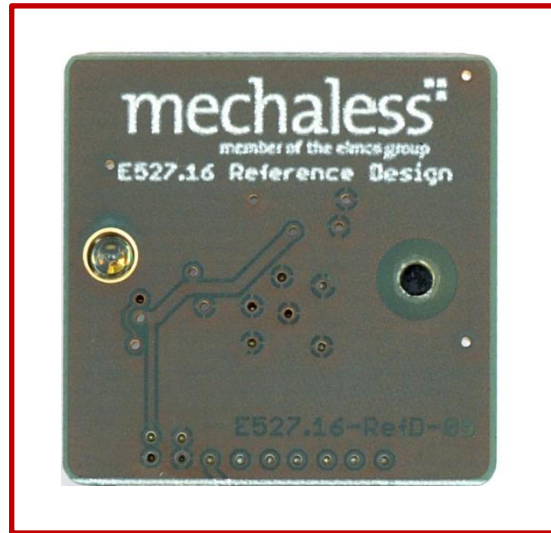


Load Area: Application part e.g. LEDs for
lamps etc.

Power Supply

Top

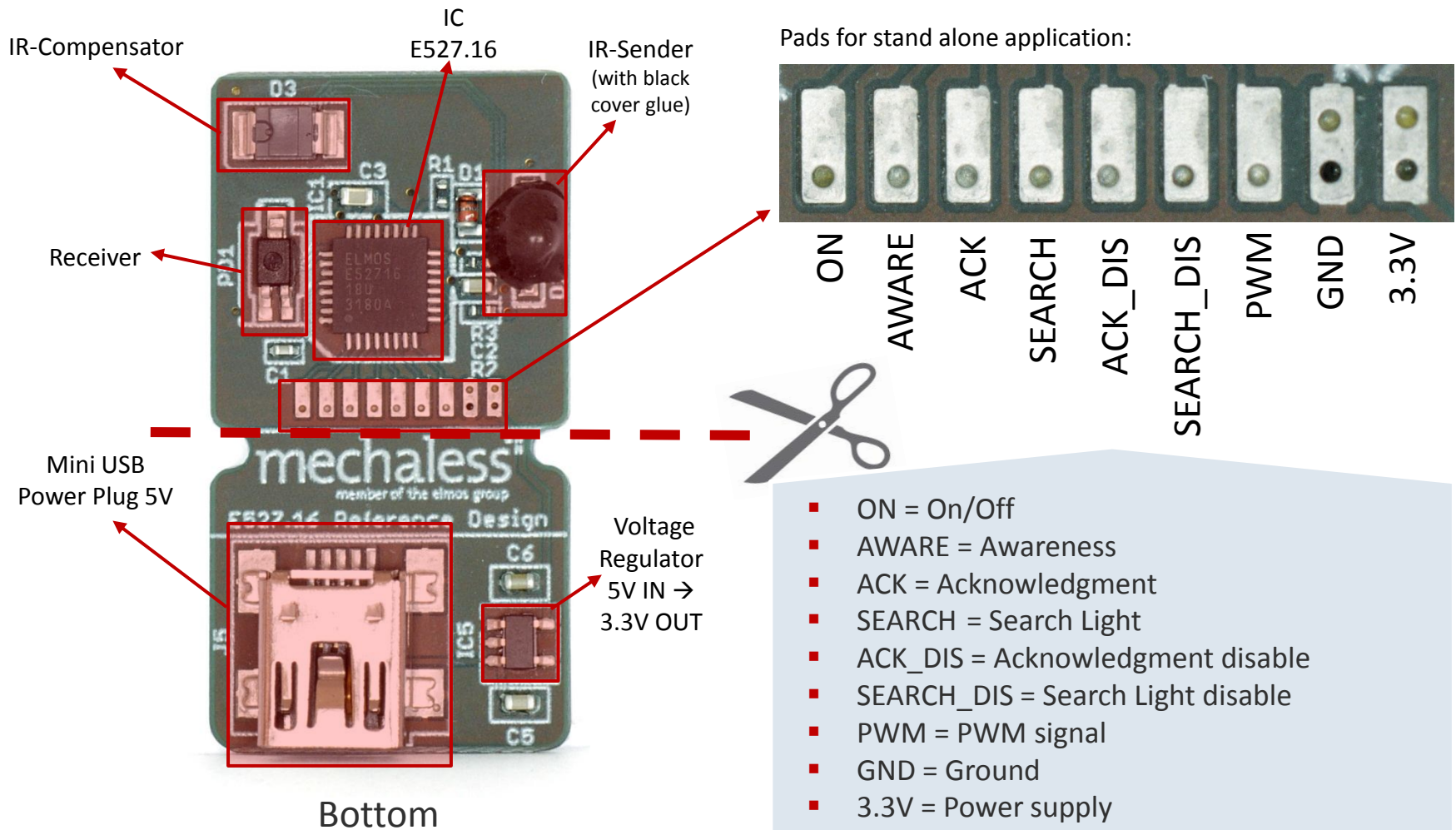
E527.16 Reference Design – Application Example



Application Example

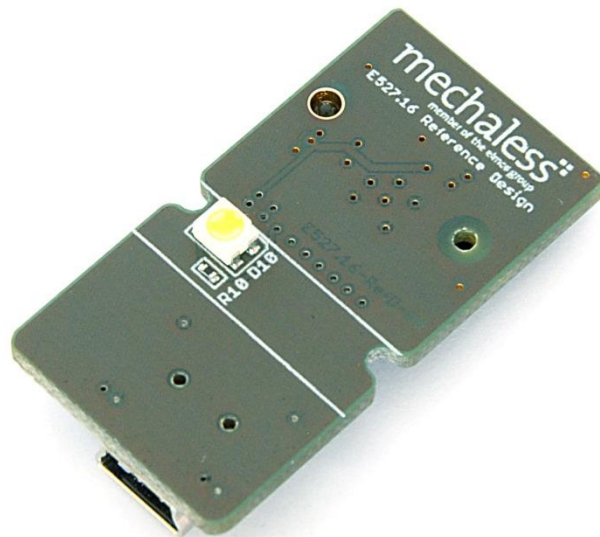
- Do not develop gesture control, simply use it!
- Ready-to-use functions (On/Off, Search Light, Dimming, Acknowledge)

E527.16 Reference Design – Components



- ON = On/Off
- AWARE = Awareness
- ACK = Acknowledgment
- SEARCH = Search Light
- ACK_DIS = Acknowledgment disable
- SEARCH_DIS = Search Light disable
- PWM = PWM signal
- GND = Ground
- 3.3V = Power supply

E527.16 Reference Design



- Reference schematics and reference layout for easy implementation are available for free
- Ready-to-use functions (On/Off, Search Light, Dimming, Acknowledge)
- Implemented gesture recognition (Awareness, Tap, Time Select, Wipe, Proximity)
- Detection range approx. 25 cm
- Direct light control possible
- PWM-Output (125 Hz, 8 Bit)
- PCB only application – no mechanics, no optics

The advanced ready-to-use functions are displayed clearly with the E527.16 Reference Design (Mechaless article no. RD 1210001).

E527.16 Reference Design – YouTube Video



<http://youtu.be/Sx2v7uat0zY>

- Please watch the E527.16 YouTube video to get more impressions:



Scan and watch video